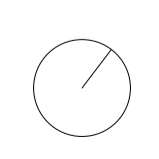
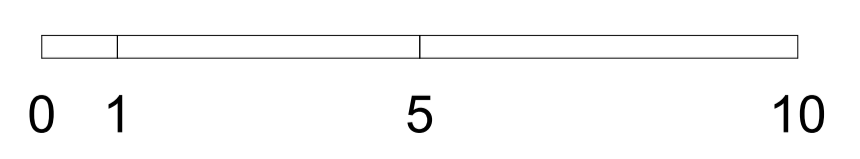
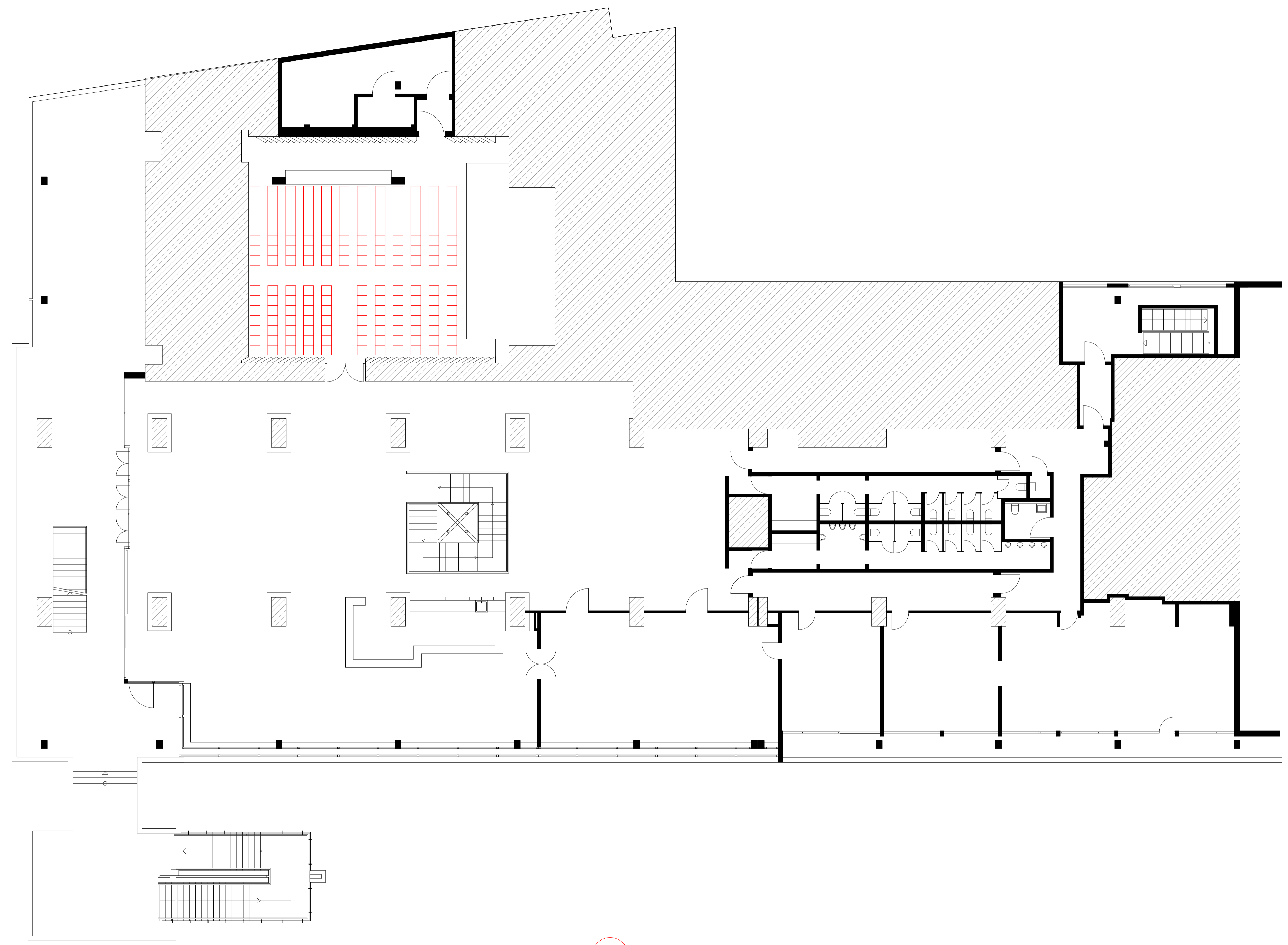
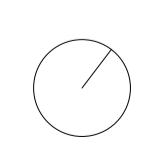
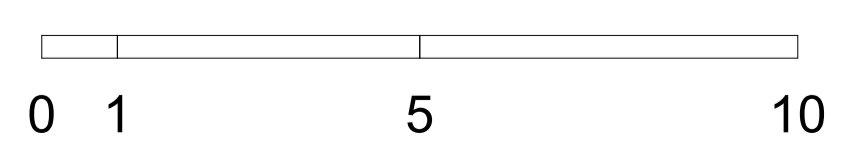
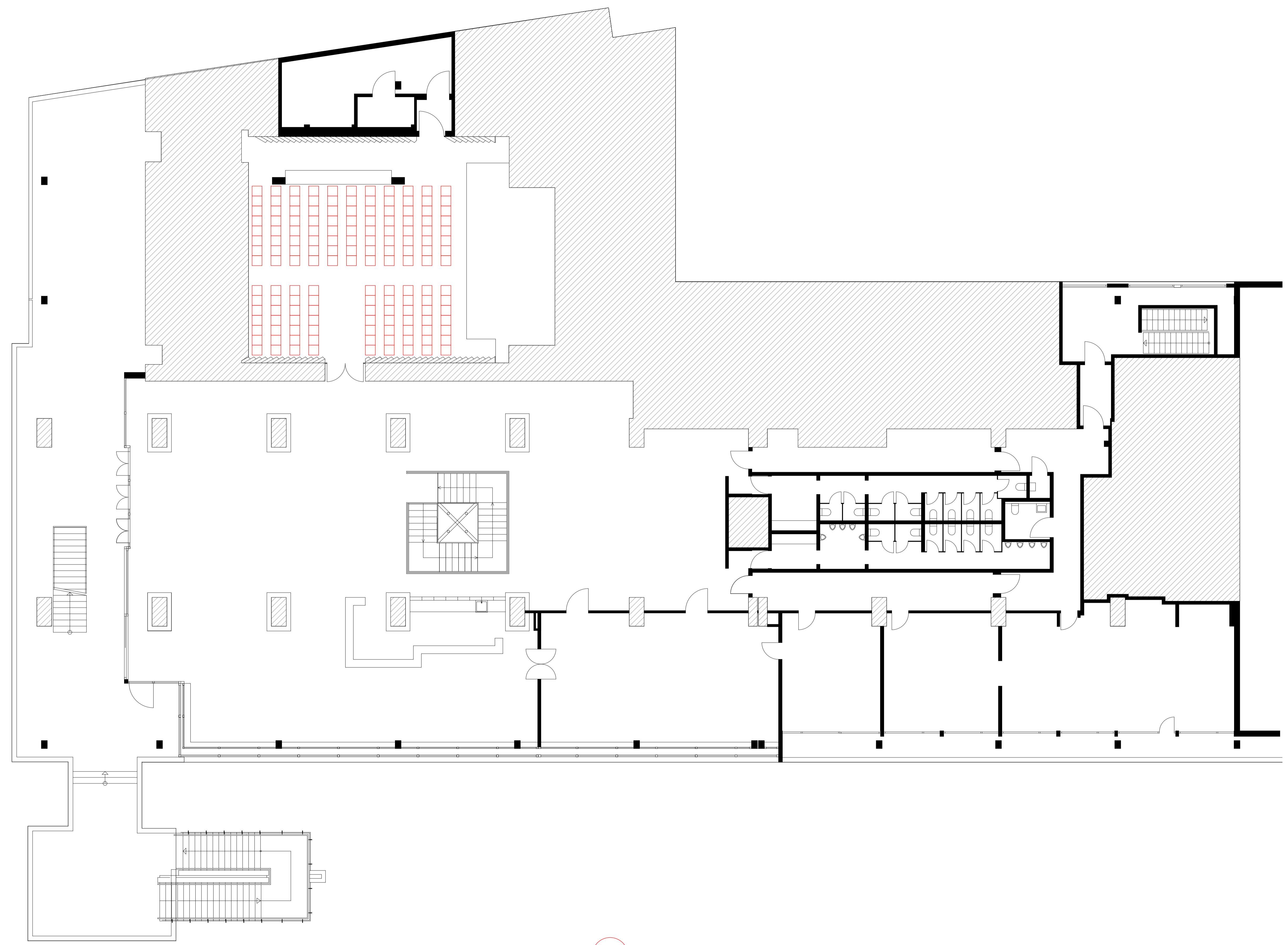




**KINO**  
Variante 1  
173 Sitzplätze  
(maximal)



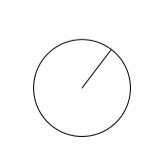
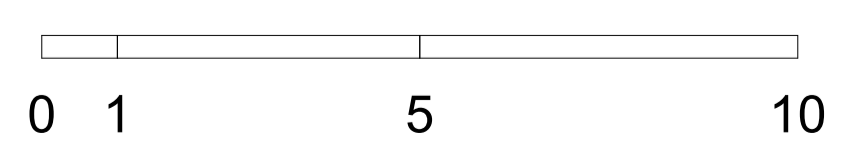
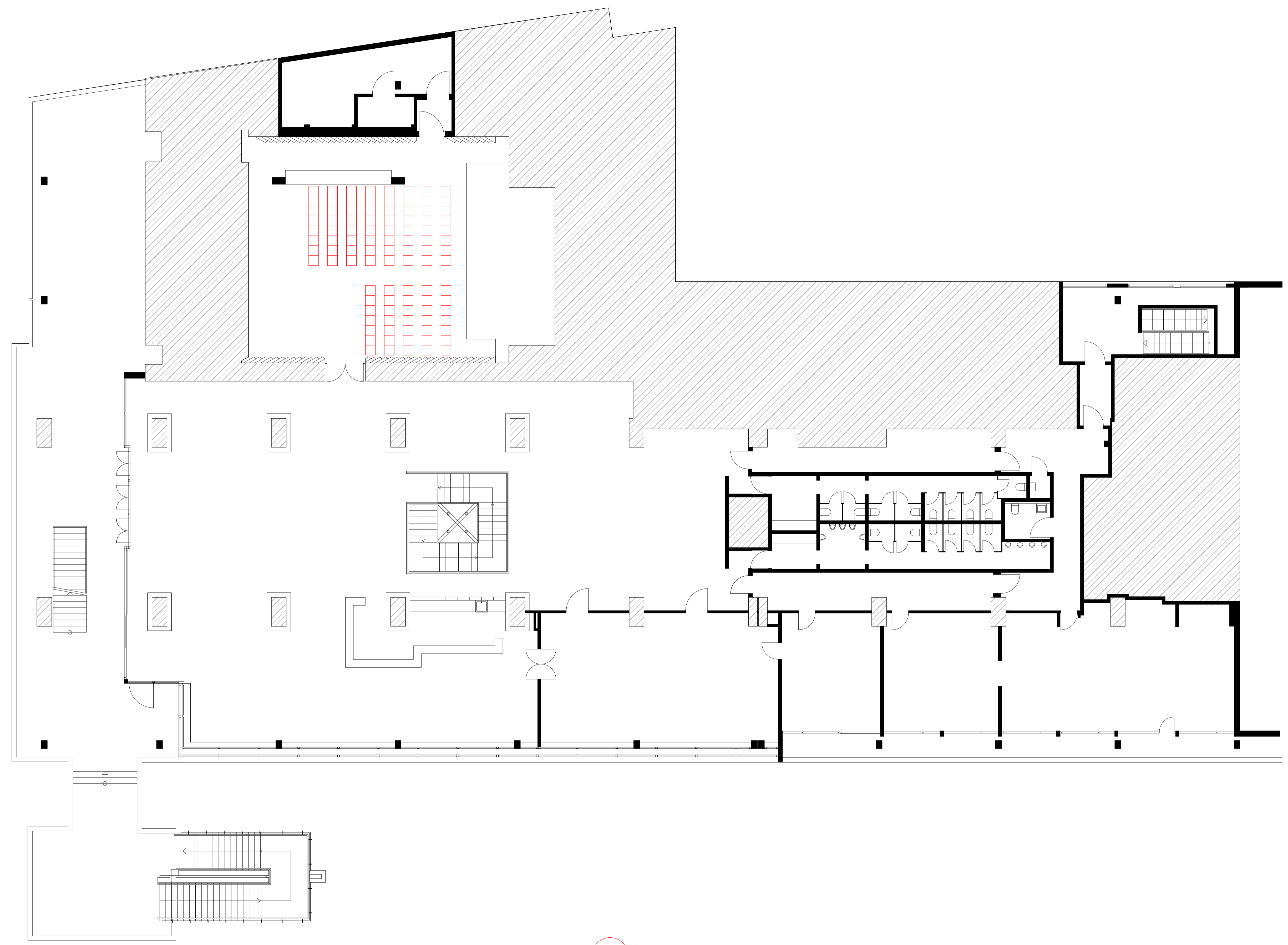
-  Sitzelement  
50 x 50 cm
-  Bühnenelement  
200 x 100 cm
-  Tisch  
d=180 cm




**KINO**  
Variante 2  
151 Sitzplätze



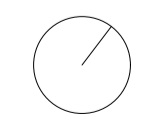
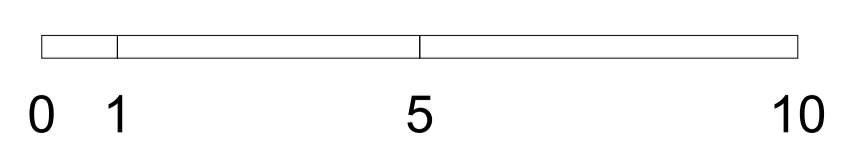
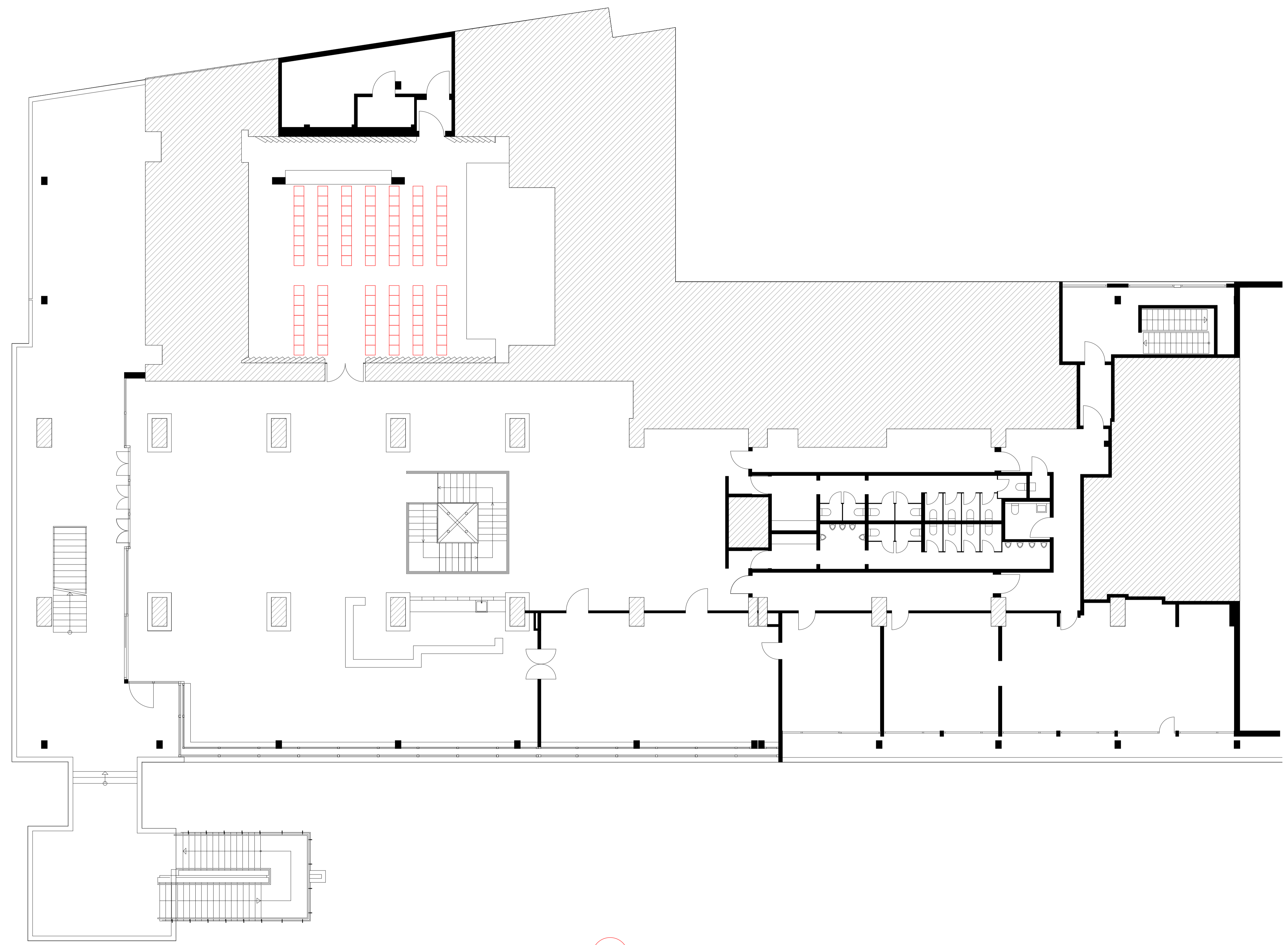
-  Sitzelement  
50 x 50 cm
-  Bühnenelement  
200 x 100 cm
-  Tisch  
d=180 cm


**KINO**  
Variante 3.1  
99 Sitzplätze



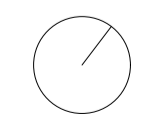
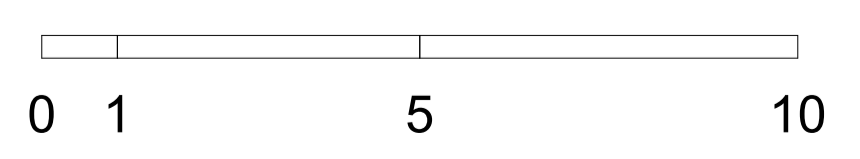
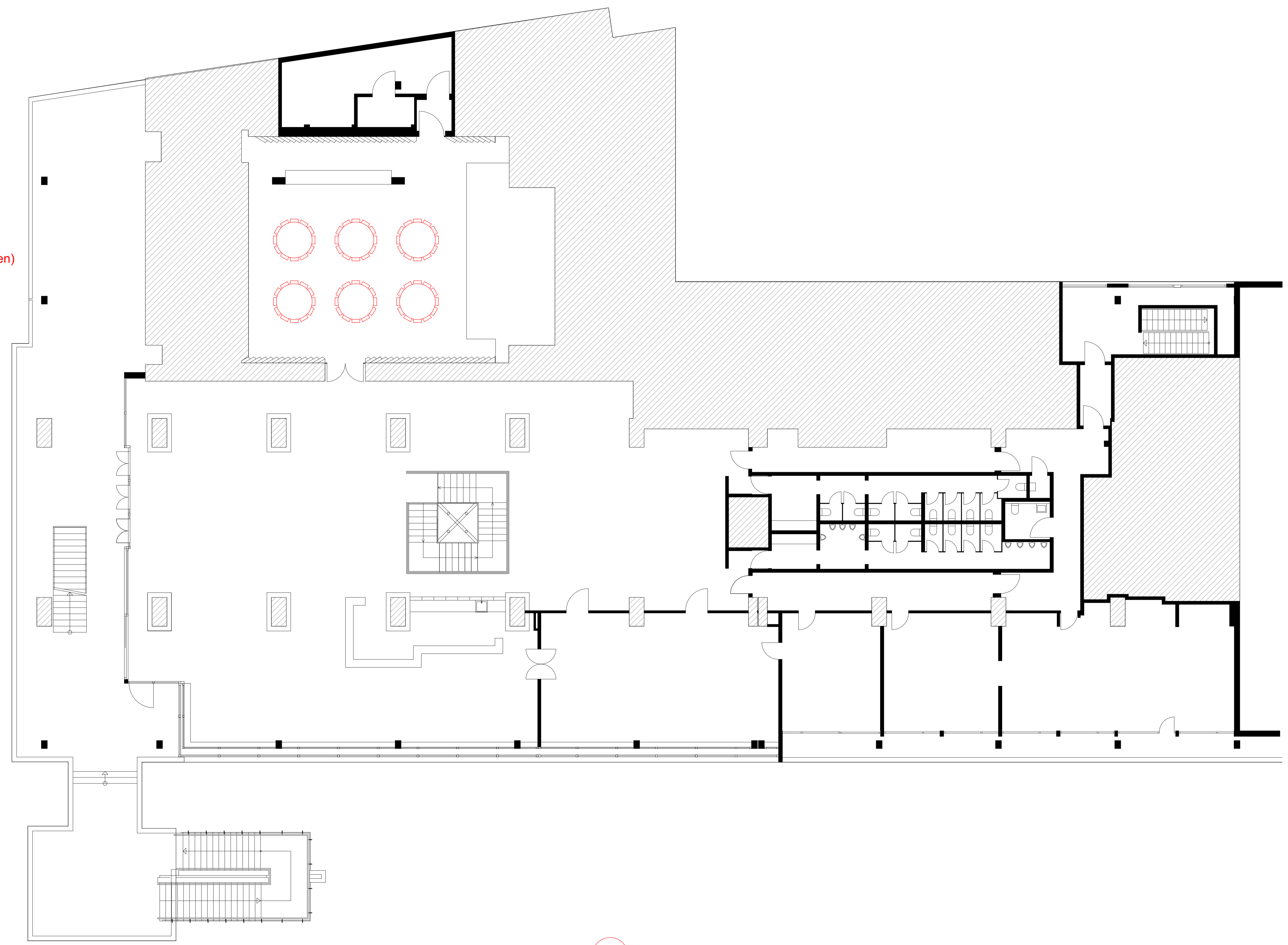
-  Sitzelement  
50 x 50 cm
-  Bühnenelement  
200 x 100 cm
-  Tisch  
d=180 cm



**KINO**  
Variante 3.2  
98 Sitzplätze

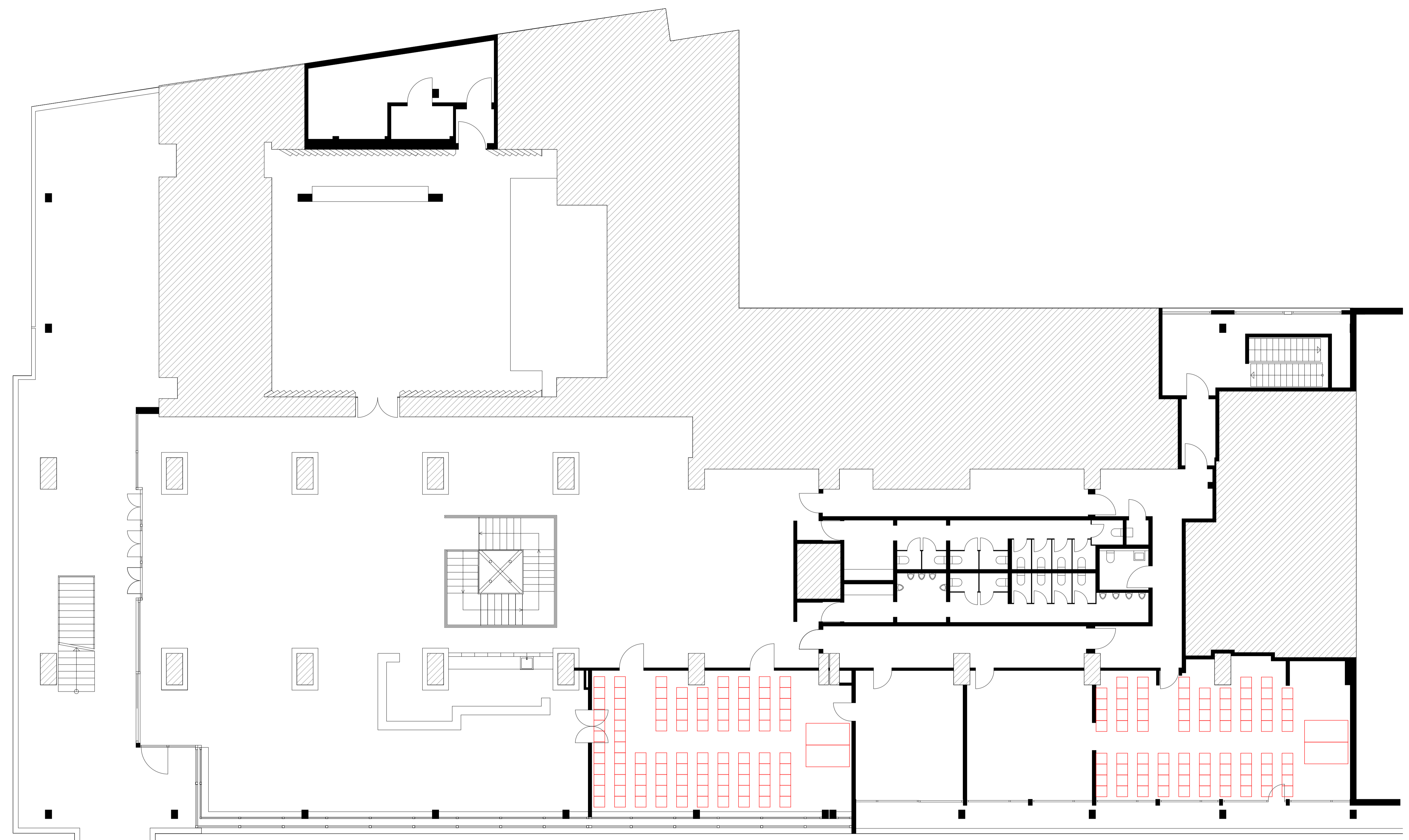


-  Sitzelement  
50 x 50 cm
-  Bühnenelement  
200 x 100 cm
-  Tisch  
d=180 cm

**KINO**  
Variante 4  
**72 Sitzplätze**  
(6 Tische mit je 12 Stühlen)

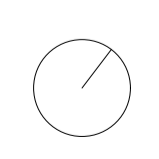
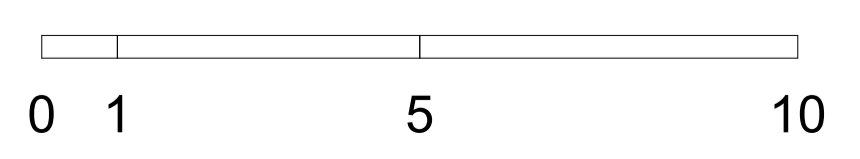



-  Sitzelement  
50 x 50 cm
-  Bühnenelement  
200 x 100 cm
-  Tisch  
d=180 cm

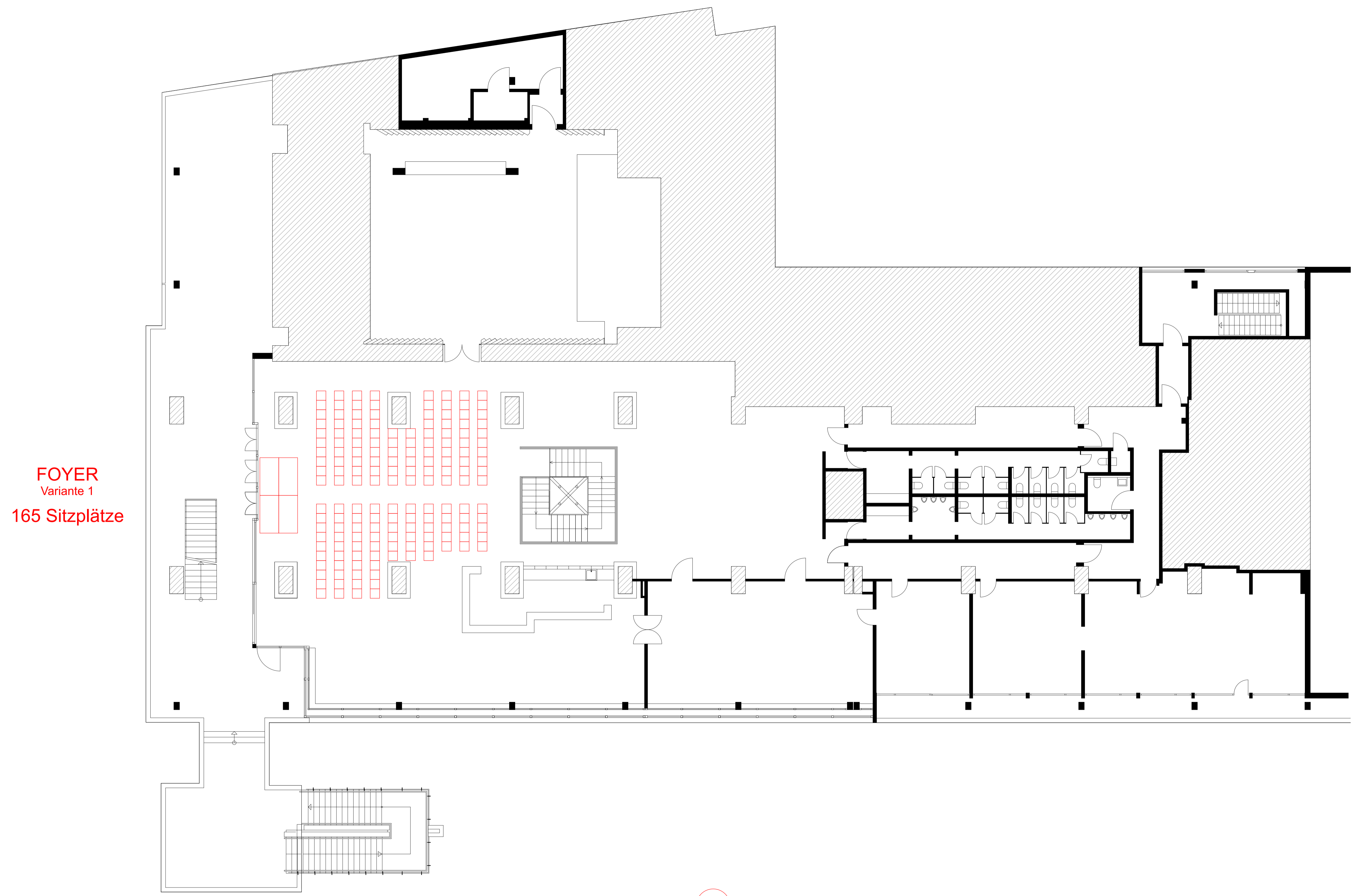


**TAGUNGSRÄUME**  
Raum 1  
97 Sitzplätze

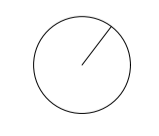
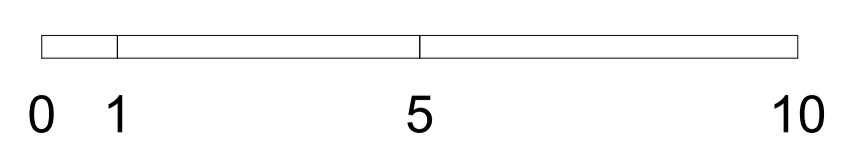
**TAGUNGSRÄUME**  
Raum 2  
81 Sitzplätze




-  Sitzelement  
50 x 50 cm
-  Bühnenelement  
200 x 100 cm
-  Tisch  
d=180 cm



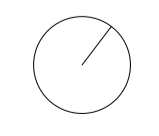
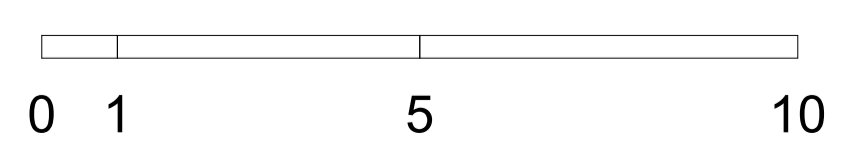
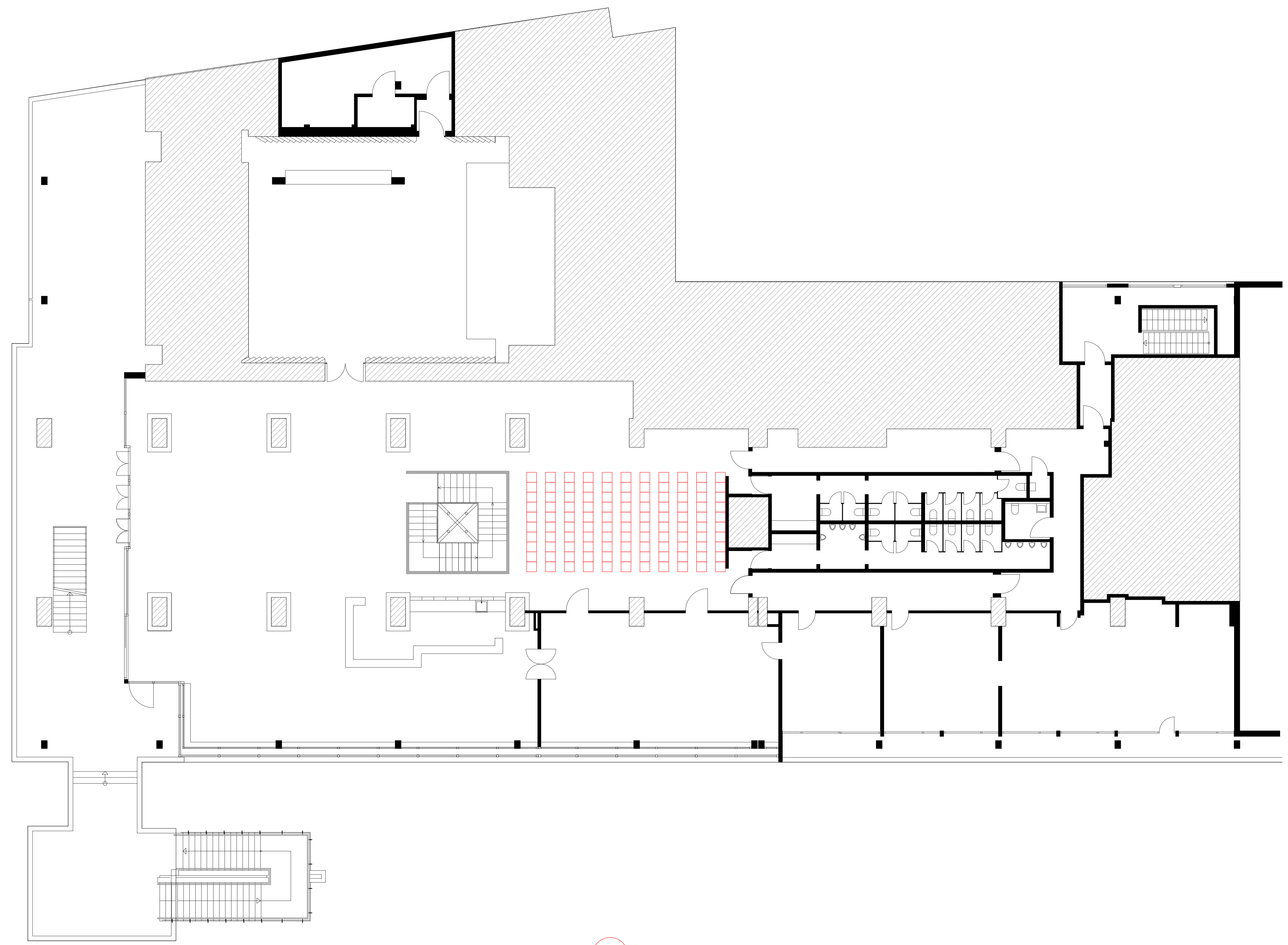
FOYER  
Variante 1  
165 Sitzplätze



-  Sitzelement  
50 x 50 cm
-  Bühnenelement  
200 x 100 cm
-  Tisch  
d=180 cm

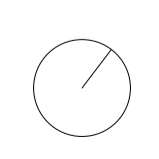
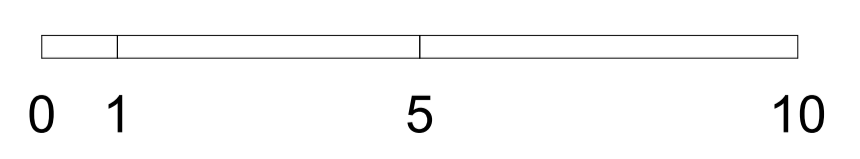
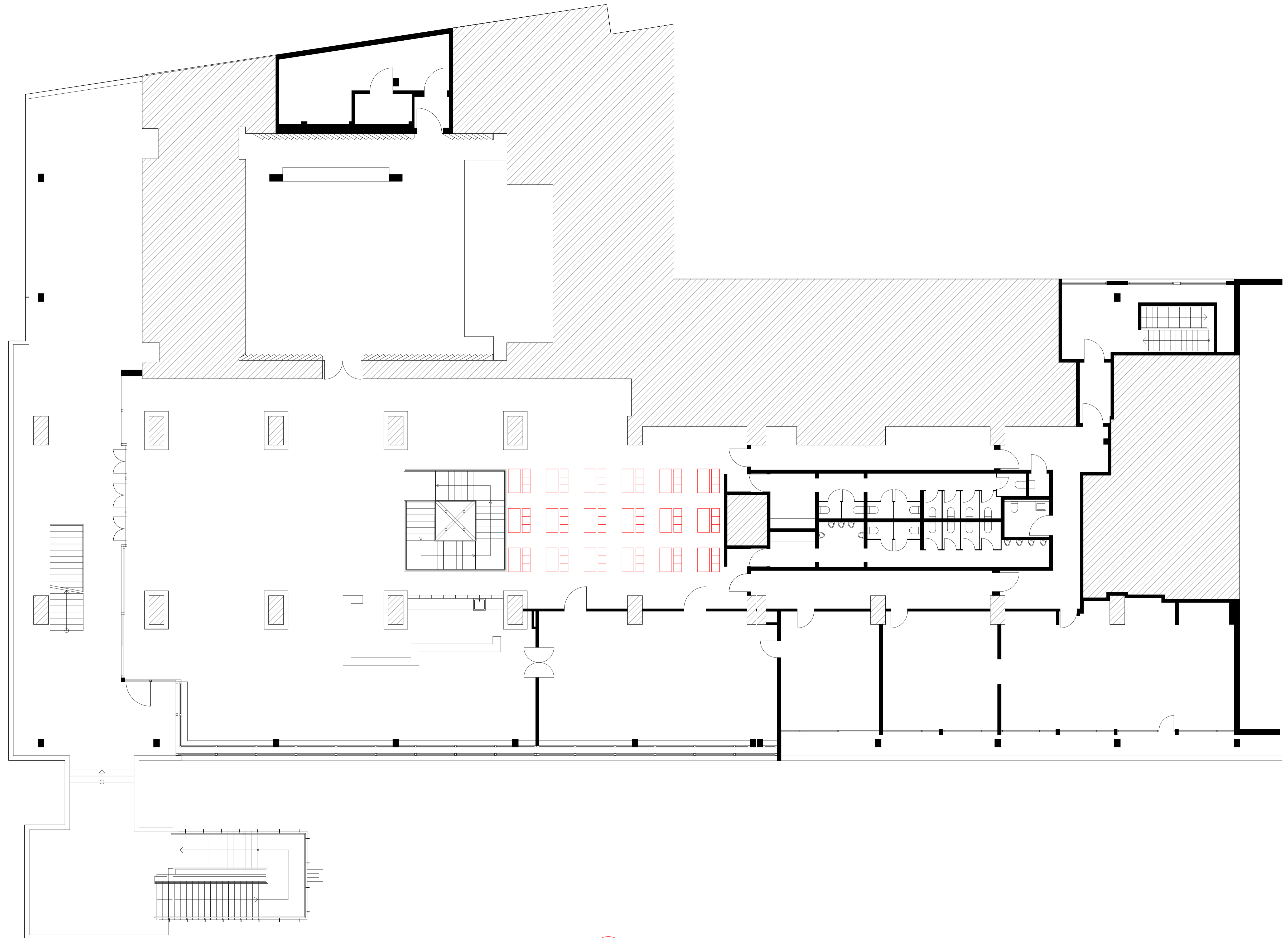



FOYER  
Variante 2  
110 Sitzplätze



-  Sitzelement  
50 x 50 cm
-  Bühnenelement  
200 x 100 cm
-  Tisch  
d=180 cm

**FOYER**  
Variante 3  
**54 Sitzplätze**  
(18 Hochtische mit je 3 Barhockern)



-  Sitzelement  
50 x 50 cm
-  Bühnenelement  
200 x 100 cm
-  Tisch  
d=180 cm